



Cobra Resources (LSE: COBR) is an exploration and resource development company listed on the London Stock Exchange that is focused on unlocking value through growing its gold resources, accelerating a rare earths discovery, and actively exploring for minerals that are critical to enabling global decarbonisation.

Our Strategy.

We pride ourselves on developing long standing relationships with our stakeholders. Our exploration approach is to work within stakeholder expectations, minimise environmental disturbance by adopting low-impact exploration practices, and prioritise rehabilitation. Through stakeholder engagement, community consultation and maintaining a transparent operating ethos, we aspire to discover and define valuable mineral resources that can economically benefit local stakeholders and communities.

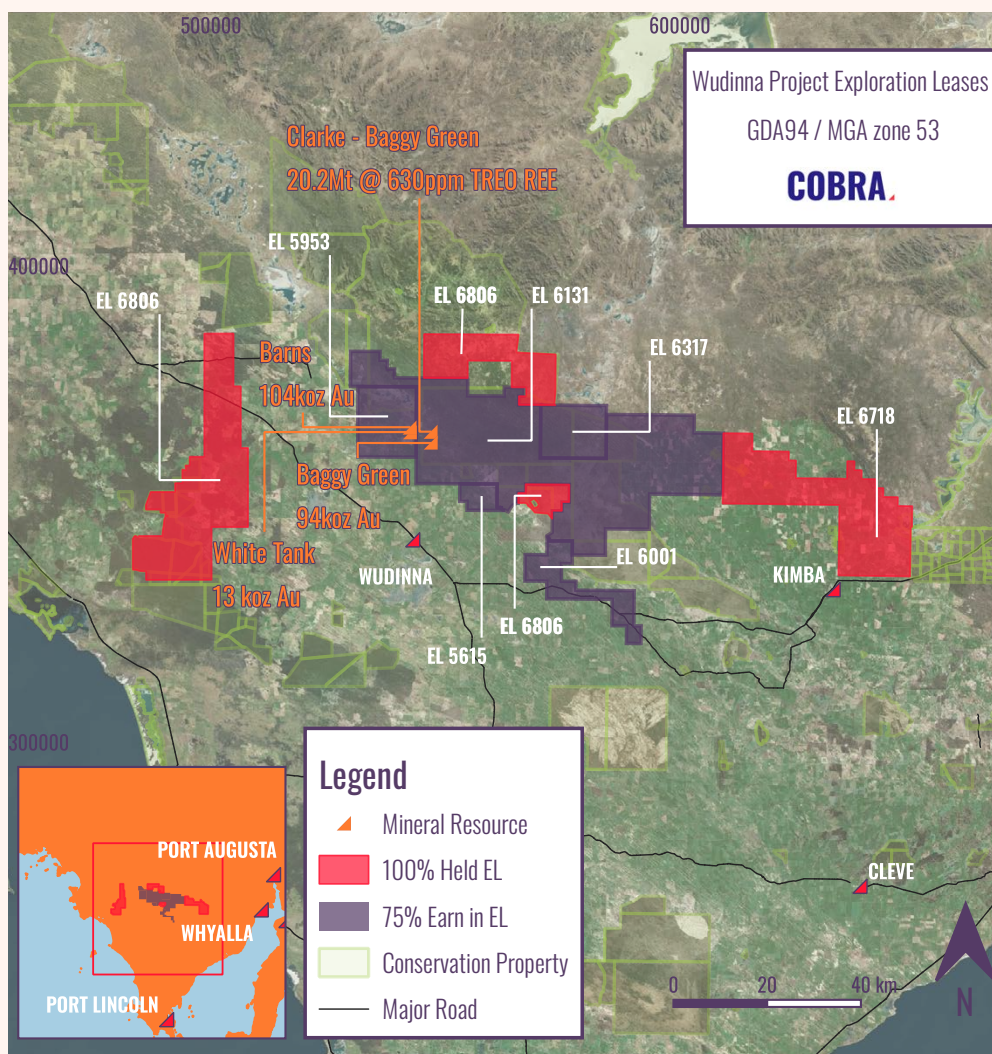
What are rare earths and why are they important?

Rare earths are critical elements, referred to as lanthanides. They are essential to producing energy efficient motors. Rare earth permanent magnets are used in many common products, unknown to users. They are the driver of efficiency, reducing power consumption in electric vehicles, wind turbines, brushless motors and many electric appliances.

The western world is heavily reliant on China for the mining and processing of rare earths and rare earth products. Owing to their importance in technical advancement in defence, aerospace, medicine, and agriculture, countries are actively seeking alternate supplies from ethical and stable jurisdictions to mitigate geopolitical risk.

OUR PROJECTS

Wudinna.



The Wudinna Project, Wudinna, Eyre Peninsula, South Australia: this project comprises several tenements totalling 3,261km², where the company is growing a unique mineral resource of a current 211,000 oz of gold with overlying rare earths.

Who We Are.

Our people are from regional communities, have interests in agriculture and understand the concerns you may have regarding exploration and mining activities on your land. Some of our people that you may work with include:



.....

Robert Blythman – Exploration Manager

Robert has over 16 years' experience in exploration and mining. Robert grew up and lives in the Barossa Valley, SA. Rob is passionate about the environment and the community in which he lives. This ethos is carried into his work where his considerate and practical approach enables him to build strong relationships with stakeholders.



.....

Rupert Verco – Managing Director

Rupert is a mining specialist with 15 years' experience in mining and resources. Rupert has a strong affiliation for agriculture. He is from Langhorne Creek, SA where he is actively involved in the family farm producing beef, fat lambs, wool and Howlin Gale Wines.



David Clarke – Technical Director

David is a renowned geologist that has facilitated a number of successful discoveries and mining projects over a 50 year career. David lives on the York Peninsula, SA where he is passionately building a business to produce Australian native food products. Amongst other agricultural pursuits, he has also previously built a highly successful family wine business.



If you have any questions please contact the company directly by:

Email: info@cobraplc.com | Ph: 08 82743734 | COBRAPLC.COM